



FLORIDA DEPARTMENT OF TRANSPORTATION PROJECT INFORMATION FLYER

State Road (SR) 9/I-95 Bridge Improvements Project
From 6th Avenue South to SR 802/Lake Worth Road
In the City of Lake Worth Beach
Palm Beach County, FL
Financial Project ID Number: 449318-1-52-01

SR 9/I-95 Bridge Improvements Project

The Florida Department of Transportation (FDOT) is pleased to provide the community with information regarding the upcoming SR 9/I-95 Bridge Improvements Project. The project limits are from 6th Avenue South to SR 802/Lake Worth Road in the City of Lake Worth Beach. This project aims to enhance the safety, resiliency, and longevity of the infrastructure for our communities.

Construction Cost: \$4 Million

Construction Start: January 2025

Estimated Completion: Fall 2025

PROJECT IMPROVEMENTS

- Removing and replacing the skid-resistant surface along the entire bridge to improve vehicle safety in all weather conditions
- Removing and reinstalling bridge joints to improve structural resilience and ride quality

TRAFFIC IMPACTS

- Work will occur in phases to minimize impacts to the traveling public

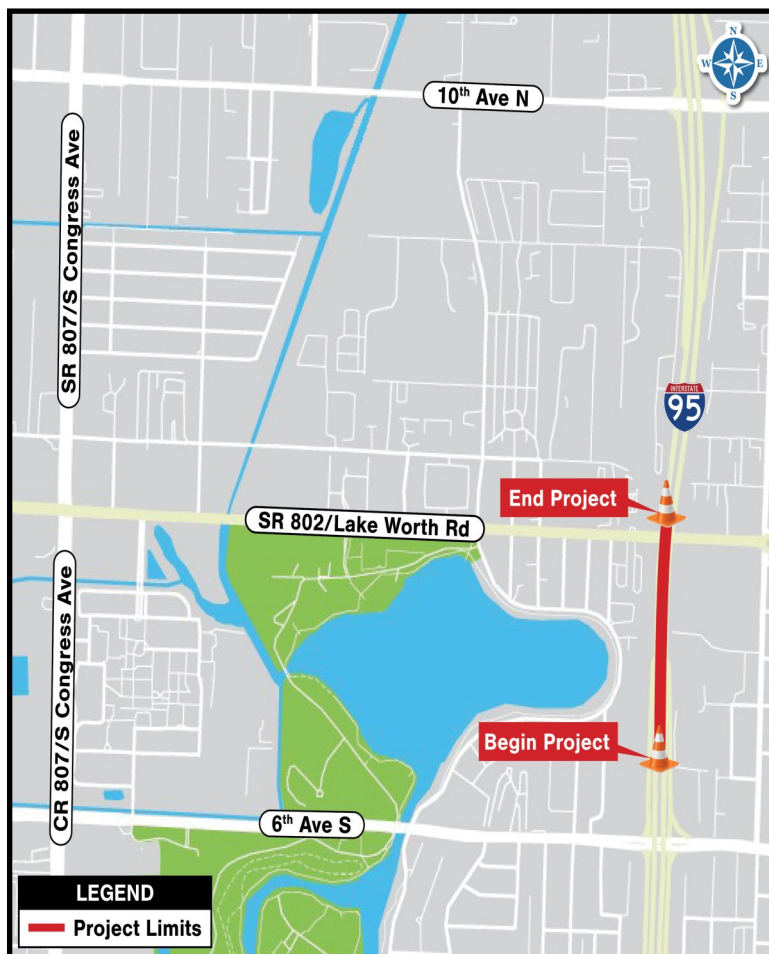
SR 9/I-95 Lane Closures:

- Single-lane closures are permitted nightly from 8:00 p.m. to 6:00 a.m., Sunday through Thursday
- Double-lane closures are permitted 11:00 p.m. to 5:30 a.m., on Sundays
- Double-lane closures are permitted nightly from 9:30 p.m. to 5:30 a.m., Monday through Thursday
- Triple-lane closures are permitted nightly from 12:00 a.m. to 5:00 a.m., on Sundays
- Triple-lane closures are permitted nightly from 10:30 p.m. to 5:00 a.m. Monday through Thursday

Ramp Lane Closures:

- The SR 9/I-95 entrance ramps from 6th Avenue South are permitted to close one lane nightly, from 7:00 p.m. to 5:00 a.m., Sunday through Thursday
- The SR 9/I-95 exit ramps to 6th Avenue South are permitted to close one lane nightly, from 8:00 p.m. to 6:00 a.m., Sunday through Thursday
- Full ramp closures of the SR 9/I-95 entrance and exit ramps at 6th Avenue South are permitted nightly, from 12:00 a.m. to 5:00 a.m., Monday through Thursday. Traffic will be detoured via 6th Avenue South, SR 807/ South Congress Avenue and 10th Avenue North.
 - Full ramp closures will not occur simultaneously
- Additional information about lane closures, detours, and pedestrian impacts will be provided in the weekly traffic report distributed by FDOT and can be viewed using the following link:

[FDOT Palm Beach County Construction dot.com](https://www.fdot.com/palm-beach-county-construction)



CONTACT INFORMATION

Kim Creech— FDOT Project Manager
kim.creech@dot.state.fl.us or (561) 608-0636

Khosrow Gandjei, E.I. — Project Administrator
kgandjei@k-factorinc.com or (561) 212-3887

Melissa Reading — Community Outreach Specialist
mreading@corradino.com or (772) 577-8803

WEBSITE AND SOCIAL MEDIA

X/Instagram: @MyFDOT_SEFL

Facebook: @MyFDOTSEFL

Project website: www.d4fdot.com



FLORIDA DEPARTMENT OF TRANSPORTATION MISSION STATEMENT

The Florida Department of Transportation's mission is to provide a safe statewide transportation system that promotes the efficient movement of people and goods, supports the state's economic competitiveness, prioritizes Florida's environment and natural resources, and preserves the quality of life and connectedness of the state's communities.

Please contact the Community Outreach Specialist, Melissa Reading, to be added to project email notification lists, and if special accommodations under the Americans with Disabilities Act (ADA) or translation services (free of charge) are needed. Public participation is solicited without regard to race, color, national origin, age, sex, religion, disability, or family status.